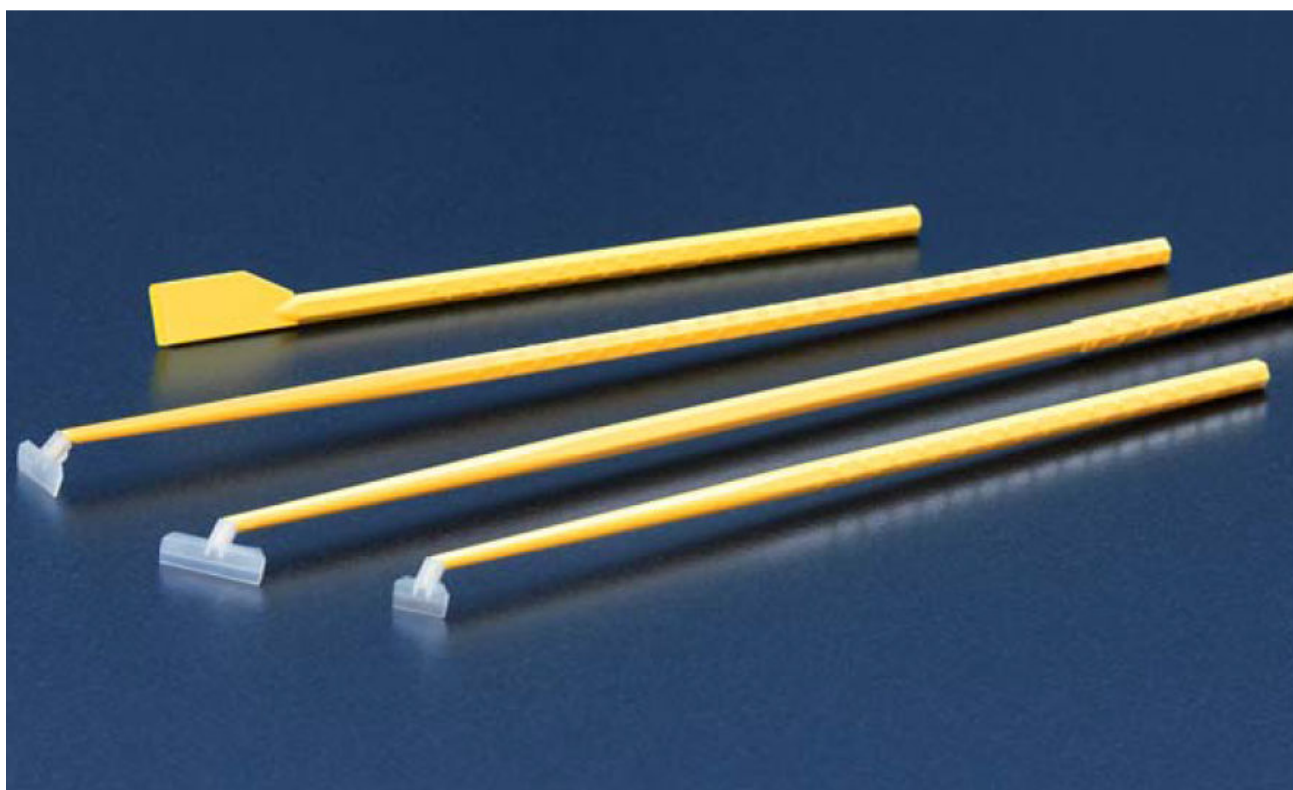


## *Cell Scraper and Cell Spatula*



A slight pressure on the handle and simultaneous minimal twist of the hand suffices to pivot the scraper head to the desired direction (picture 1). Pivoting head negates need to remove scraper head to re-position and lowers contamination risk. By this you receive thorough cell retrieval from vessels of many shapes and sizes.

### Features of the Cell Scraper:

- Scraper heads made from a flexible polyethylene material
- Pivoting scraper head for easy maneuvering
- Different blade width
- Small raised knobs on handle for secure grip
- Lint free plastic/paper blister (picture 2)
- User friendly dispenser case

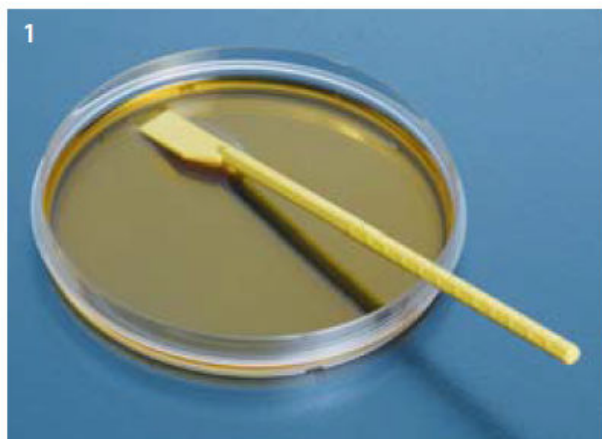
The cell spatula features a specially formed blade with a sharp edge. It is commonly used with the TPP tissue culture flask with re-closable lid or peel-off foil or with large tissue culture dishes.

### Features of the Cell Spatula:





- Special formed blade with sharp edges
- Small raised knobs on handle for secure grip
- Lint free plastic/paper blister (picture 2)
- User friendly dispenser case

50 anni in collaborazione con il mondo della sanita', della ricerca scientifica, del controllo ambientale e di qualita'

- 1 Pivot the scraper head by slight pressure on the handle with the forefinger thus pushing the handle downwards. Slight move of the handle will twist the head to the required position.
- 2 Small raised knobs on the handles for a secure grip.
- 3 Different blade widths.



- 1 Usage of cell scraper in a large TPP tissue culture dish.
- 2 Specially formed blade of cell spatula.

Type	Product-No.	Length mm	Version	Width of Blade mm	Material	Qty / Bag	Qty / Case
	99002	240	rotating	13	PP/PE	1	150
	99003	300	rotating	20	PP/PE	1	150
	99004	380	rotating	25	PP/PE	1	100
	99010	195	fix	14	PP	1	150

Product-No.	Field of Application
99002	tissue culture flask: 25/75 cm <sup>2</sup> , tissue culture flat tube 10, tissue culture dish: Ø 40/60 mm
99003	tissue culture flask: 75/150 cm <sup>2</sup> , tissue culture dish: Ø 100/150 mm
99004	tissue culture flask: 300 cm <sup>2</sup>
99010	tissue culture dish 150, many other applications



- 3 The cell scraper head is made of soft polyethylene to protect the cells.
- 4 Convenient user friendly TPP-dispenser.